



Bedwell Road, London, N17 7AH

Price Guide £400,000



Cole Harding is thrilled to present this warm two bedroom Victorian terrace located near Risley Avenue in Tottenham.

The property is ideally located for a young family getting on to the property with excellent primary schools, local park, amenities and excellent travel links

The property offers separate living room, fitted kitchen, large conservatory, and private rear garden, Bathroom downstairs and two double bedrooms upstairs.

The family has lived here for 12 years and have decided to relocate.

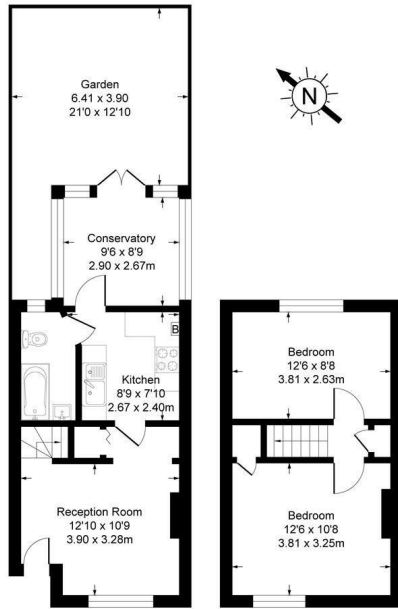
We recommend internal viewings.

- Two bedroom House
- Freehold
- Separate living room
- Fitted kitchen
- Conservatory
- Private rear garden
- Double bedrooms
- Close to local parks
- Close to Schools
- Close to transport

Viewing

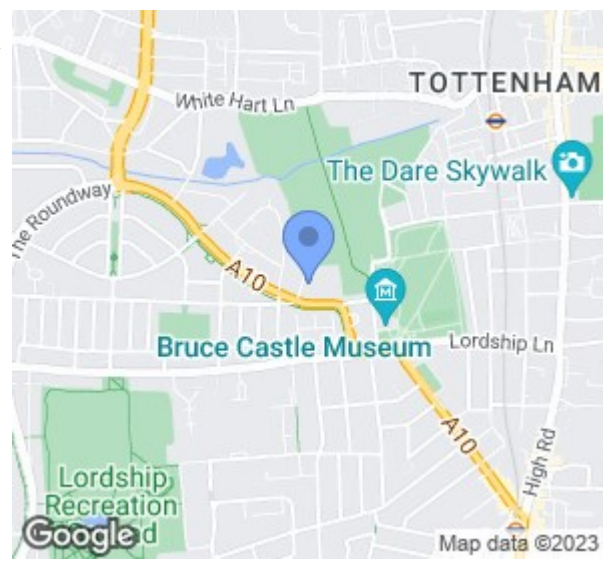
To arrange a viewing on this property or require further information please contact one of our team on 0208 059 4444

Approximate Gross Internal Area
663 sq ft - 62 sq m



Ground Floor

First Floor



Energy Efficiency Rating		
	Current	Potential
Very energy efficient - lower running costs		
(92 plus) A		89
(81-91) B		
(69-80) C	69	
(55-68) D		
(39-54) E		
(21-38) F		
(1-20) G		
Not energy efficient - higher running costs		
England & Wales		EU Directive 2002/91/EC



These particulars, whilst believed to be accurate are set out as a general outline only for guidance and do not constitute any part of an offer or contract. Intending purchasers should not rely on them as statements of representation of fact, but must satisfy themselves by inspection or otherwise as to their accuracy. No person in this firm's employment has the authority to make or give any representation or warranty in respect of the property.

Cole Harding

11 Northumberland Park, London, N17 0TA

T. 0208 059 4444 | E. info@coleharding.co.uk